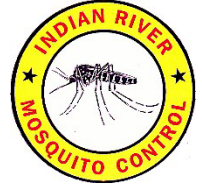


# Indian River Mosquito Control District

---



Commissioner Janice Broda ♦ Commissioner Anna Kirkland  
Claudia Alvarado, Interim Executive Director  
5655 41<sup>st</sup> Street, Vero Beach, FL 32967 ♦ Phone: 772.562.2393  
<http://irmosquito.com> ♦ [irmcd@irmcd.org](mailto:irmcd@irmcd.org)

April 30, 2026

The Indian River Mosquito Control District is accepting applications for the Impoundment Operator position.

Hourly Salary: \$22.17/hr.

- Paid Time Off
  - Medical and Annual leave accrual
  - 11 Paid Holidays
- FRS Retirement
- Group Life Insurance
- Medical, Dental and Vision Insurance
- Voluntary 457(b) deferred compensation retirement savings plan

Position Open until filled.

Please submit Resume to Human Resources

Contact:

Human Resources

Indian River Mosquito Control District

5655 41st Street, Vero Beach, FL 32967

(772) 562-2393

[hr@irmcd.org](mailto:hr@irmcd.org)

Under Florida law, email addresses are public records. If you do not want your e-mail address released in response to a public record request do not send electronic mail to this entity. Instead, contact this office by phone.



## Indian River Mosquito Control District Position Description

### IMPOUNDMENT OPERATOR I/II

Department: **Operations**

Rev: **04/30/2026**

Reports To: **Impoundment Supervisor**

FLSA: **Non-exempt**

Pay Grade: **3**

**General Scope of Work:** Performs skilled crafts and trades work in the inspection, monitoring, installation, maintenance, and repair of mosquito control impoundment areas, which includes earthen structures, weirs, culverts, piping and impoundment pumps. The work involves the operation of heavy and complex construction equipment and supervision is provided to work crews, as necessary.

**Essential Functions (without accommodations):** The essential functions listed are intended to be representative of the tasks performed within this position. The omission of an essential function does not preclude the District from assigning duties not listed herein if such functions are logical assignment to the position.

- Inspect, monitor, and maintain impoundment dikes and earthen structures, weirs and water levels in impoundment areas. Monitor water levels and water quality to maintain a healthy salt-marsh environment that is effective in controlling mosquito populations.
- Operate heavy equipment including dump trucks, backhoes, lowboy tractor and trailer, tractors, crane truck, hydraulic excavators, loaders, etc. Inspect equipment prior to operation to ensure safe and proper operating condition.
- Operate hand tools, power tools, light and heavy equipment and perform manual labor necessary for the operation and maintenance of mosquito control structures. Heavy equipment operated includes dump trucks, backhoes, lowboy tractor and trailer, tractors, pumps, hydraulic excavators, loaders, etc. Small tools operated include welders, chainsaws, machetes, carpentry tools, etc.
- Maintain, repair, and install pumps, motors, culverts, tide gates, aerators, water level indicators, rain gauges, and impoundment structures. Perform minor electrical repairs as needed.
- Maintain records of daily work completed and weekly records of pump on/off dates and impoundment water levels.
- Closing and sealing culverts on seasonal pump-up and end of drawdowns and opening culverts at drawdowns and flooding season's end or as instructed.
- Conduct impoundment dike construction and maintenance projects and assist with the trimming, clearing and chemical control of dike vegetation using best management practices, which may require the operation of heavy equipment and equipment trailers. Report impoundment areas that require repair or the control of vegetation to supervisor. Remove and treat exotic vegetation on dikes and along ditches.
- Perform basic mechanical, electrical, and/or fabrication duties as needed for the maintenance of electric and diesel pumps, culverts, and heavy equipment. Maintain accurate records of maintenance work done. Maintain tools and vehicles according to prescribed standards and schedules.
- In the absence of the supervisor, coordinate with the Larvicide Supervisor to set impoundment conditions for the optimal control of saltmarsh mosquitoes.
- Follow the District's policies, including safety policy, and comply with all local, state and federal regulations.
- Ability to perform nighttime ULV spray duties when needed.
- Perform tasks of other job descriptions as deemed necessary to fulfill the District's functions.

## **Typical Requirements**

### ***Education/Experience***

#### **Required:**

- Must be in possession of a CDL license.
- High school diploma, or Graduate Equivalency Diploma (GED), supplemented by minimum of previous experience and/or training as described below.
- An equivalent combination of education, training and experience that provides the knowledge, skills, and abilities necessary to perform the essential work tasks of this position.

#### **Preferred:**

- At least 1 year of experience in impoundment operation and maintenance with a recognized mosquito control program.

### ***Licenses and Certifications***

- Possession of, or ability to obtain, a valid Public Health Pest Control license from the Florida Department of Agriculture and Consumer Services within six months of employment. Must be maintained through employment.
- Possession of, or ability to obtain, a valid Public Applicator license in Natural Areas Weed Management from the Florida Department of Agriculture and Consumer Services within six months of employment. Must be maintained through employment.
- Expected to obtain Florida Stormwater Erosion and Sedimentation Control Inspector certification.
- Expected to obtain a Boater's Safety Certificate.

### ***Knowledge, Abilities, and Skills***

- Knowledge of operation and maintenance of equipment used in mosquito impoundment operations, including heavy equipment, vehicles and small tools; operation, installation and maintenance of impoundment structures; methods and techniques used in the installation and operation of impoundment pumps, culverts and tide gates, electrical components and treatments and removal of exotic/invasive plants.
- Ability to work flexible hours, when necessary, including nights, weekends, and holidays.
- Ability to effectively interact and communicate with the public and District staff, communicate detailed reports and observations, follow detailed verbal instructions and read and understand chemical label instructions written in English.
- Ability to operate a variety of light and heavy equipment including various sized trucks, rubber-tracked loaders, tractor, forklift, lawn-maintenance equipment and motorized watercraft. Ability to drive and back-up a truck with a trailer on rough terrain.
- Possession of basic swimming and water safety skills necessary to survive hazards associated with aquatic activities and environments.
- Attendance at out-of-town meetings, classes and other events, some of which involve overnight stays, is occasionally required.

**Work Environment/Physical Requirements:**

**Physical Requirements:** This position requires physical strength and agility to perform tasks under varying weather conditions and to work extended hours during emergency situations. The employee must have adequate vision and hearing, with or without correction.

Work involves frequent walking, standing, and use of both hands and fingers. The ability to lift and carry objects weighing up to 50 pounds on a periodic basis is required. The employee must be able to communicate clearly.

Basic swimming ability and water safety skills are required to address potential hazards associated with aquatic environments.

**Work Environment:** Work involves exposure to electrical hazards, moving machinery, heat, noise, odors, water, wildlife, and outdoor environmental conditions. This position requires working independently in physically demanding environments, including marshes, swamps, and remote, heavily vegetated areas, and may involve prolonged exposure to extreme weather conditions.

Employees may encounter mosquitoes, sandflies, and other biting arthropods; alligators; snakes (including venomous species); spiders; wasps; ants; bees; and toxic plants, as well as other flora and fauna common to natural environments.