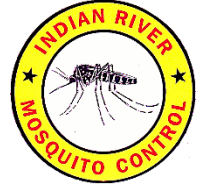


# Indian River Mosquito Control District

---



Commissioner Janice Broda ♦ Commissioner Matt Erpenbeck ♦ Commissioner Anna Kirkland  
Sherry Burroughs, Executive Director  
5655 41<sup>st</sup> Street, Vero Beach, FL 32967 ♦ Phone: 772.562.2393  
<http://irmosquito.com> ♦ [irmcd@irmosquito2.org](mailto:irmcd@irmosquito2.org)

February 24, 2026

The Indian River Mosquito Control District is accepting applications for the non-exempt full-time position of Impoundment Operator.

Hourly Salary: Impoundment Operator I - \$17.68 - \$31.00

- Paid Time Off  
11 Paid Holidays
- FRS Retirement
- Group Life Insurance
- Medical, Dental and Vision Insurance
- Voluntary 457(b) deferred compensation retirement savings plan

Position Open until filled.

Please submit resume to Human Resources.

Tamar Rivera  
Human Resources Manager  
Indian River Mosquito Control District  
5655 41st Street, Vero Beach, FL 32967  
(772) 562-2393  
[t.rivera@irmcd.org](mailto:t.rivera@irmcd.org)

Under Florida law, email addresses are public records. If you do not want your e-mail address released in response to a public record request do not send electronic mail to this entity. Instead, contact this office by phone.



## Indian River Mosquito Control District Position Description

### IMPOUNDMENT OPERATOR I/II

Department: **Operations**

Rev: **09/26/2025**

Reports To: **Assistant Director**

FLSA: **Non-exempt**

Pay Grade: **1/3**

#### **General Scope of Work**

Performs skilled crafts and trades work in the inspection, monitoring, installation, maintenance, and repair of mosquito control impoundment areas, which includes earthen structures, weirs, culverts, piping and impoundment pumps. The work involves the operation of heavy and complex construction equipment and supervision is provided to work crews, as necessary.

#### **Essential Functions (without accommodations)**

The listed essential functions are intended to be representative of the tasks performed within this position. The omission of an essential function does not preclude the District from assigning duties not listed herein if such functions are logical assignment to the position.

- Inspect, monitor, and maintain impoundment dikes and earthen structures, weirs and water levels in impoundment areas. Monitor water levels and water quality to maintain a healthy salt-marsh environment that is effective in controlling mosquito populations.
- Operate heavy equipment including dump trucks, backhoes, lowboy tractor and trailer, tractors, crane truck, hydraulic excavators, loaders, etc. Inspect equipment prior to operation to ensure safe and proper operating condition.
- Operate hand tools, power tools, light and heavy equipment and perform manual labor necessary for the operation and maintenance of mosquito control structures. Heavy equipment operated includes dump trucks, backhoes, lowboy tractor and trailer, tractors, pumps, hydraulic excavators, loaders, etc. Small tools operated include welders, chainsaws, machetes, carpentry tools, etc.
- Maintain, repair, and install pumps, motors, culverts, tide gates, aerators, water level indicators, rain gauges, and impoundment structures. Perform minor electrical repairs as needed.
- Maintain records of daily work completed and weekly records of pump on/off dates and impoundment water levels.
- Closing and sealing culverts on seasonal pump-up and end of drawdowns and opening culverts at drawdowns and flooding season's end or as instructed.
- Conduct impoundment dike construction and maintenance projects and assist with the trimming, clearing and chemical control of dike vegetation using best management practices, which may require the operation of heavy equipment and equipment trailers. Report impoundment areas that require repair or the control of vegetation to supervisor. Remove and treat exotic vegetation on dikes and along ditches.
- Perform basic mechanical, electrical, and/or fabrication duties as needed for the maintenance of electric and diesel pumps, culverts, and heavy equipment. Maintain accurate records of maintenance work done. Maintain tools and vehicles according to prescribed standards and schedules.
- In the absence of the supervisor, coordinate with the Larvicide Supervisor to set impoundment conditions for the optimal control of saltmarsh mosquitoes.
- Follow the District's policies, including safety policy, and comply with all local, state and federal regulations.
- Ability to perform nighttime ULV spray duties when needed.
- Perform tasks of other job descriptions as deemed necessary to fulfill the District's functions.

## Typical Requirements

### ***Education/Experience***

- High school diploma, or Graduate Equivalency Diploma (GED), supplemented by minimum of previous experience and/or training as described below.
- An equivalent combination of education, training and experience that provides the knowledge, skills, and abilities necessary to perform the essential work tasks of this position.
- ***Impoundment Operator I:*** At least 6 months of experience in operating heavy and light equipment, pump operations, electrical equipment and/or equipment maintenance/operation.
- ***Impoundment Operator II:*** At least 1 year of experience in impoundment operation and maintenance with a recognized mosquito control program or an equivalent combination of education, training and experience that provides the knowledge, skills, and abilities necessary to perform the essential work tasks of this position. Must be in possession or can obtain a CDL license within 6 months of starting the position.

### ***Licenses and Certifications***

- Possession of, or ability to obtain, a valid Public Health Pest Control license from the Florida Department of Agriculture and Consumer Services within six months of employment. Must be maintained through employment.
- Possession of, or ability to obtain, a valid Public Applicator license in Natural Areas Weed Management from the Florida Department of Agriculture and Consumer Services within six months of employment. Must be maintained through employment.
- Expected to obtain Florida Stormwater Erosion and Sedimentation Control Inspector certification.
- Expected to obtain a Boater's Safety Certificate.

### ***Knowledge, Abilities, and Skills***

- Knowledge of operation and maintenance of equipment used in mosquito impoundment operations, including heavy equipment, vehicles and small tools; operation, installation and maintenance of impoundment structures; methods and techniques used in the installation and operation of impoundment pumps, culverts and tide gates, electrical components and treatments and removal of exotic/invasive plants.
- Ability to work flexible hours, when necessary, including nights, weekends, and holidays.
- Ability to effectively interact and communicate with the public and District staff, communicate detailed reports and observations, follow detailed verbal instructions and read and understand chemical label instructions written in English.
- Ability to operate a variety of light and heavy equipment including various sized trucks, rubber-tracked loader, tractor, forklift, lawn-maintenance equipment and motorized watercraft. Ability to drive and back-up a truck with a trailer on rough terrain.
- Possession of basic swimming and water safety skills necessary to survive hazards associated with aquatic activities and environments.
- Attendance at out-of-town meetings, classes and other events, some of which involve overnight stays, is occasionally required.

**Work Environment/Physical Requirements:**

**Physical Requirements:** Heavy physical activity is required on a regular basis including lifting up to 50 pounds, reaching and pulling with arms, stooping, kneeling and bending frequently and walking for long distances and climbing over and around natural obstacles. Excellent vision, both close and distance, is frequently required.

**Work Environment:** The physical demands and work environment characteristics described here are representative of those that must be met by an employee to successfully perform the essential functions of this job. Reasonable accommodations may be made to enable individuals with disabilities to perform essential functions. This position involves work in both inside and outside environmental conditions and may encounter wildlife, noise, vibration, proximity to moving parts, working in high places, exposure to chemicals, fumes, odors, and oils and may be required to wear a respirator. The work environment varies but includes warehouses, office buildings, vehicles, mangroves, and fields. Regular exposure to all types of weather is required as the position is required to work outside, exposed to sun, rain, mud, and insects. Frequent local travel is required. Noise level is usually low but occasional exposure to moderate noise levels when around pony motors. Working with and around chemicals, which are stored, handled, applied/used and disposed of according to exact labeling instructions, is frequently required.